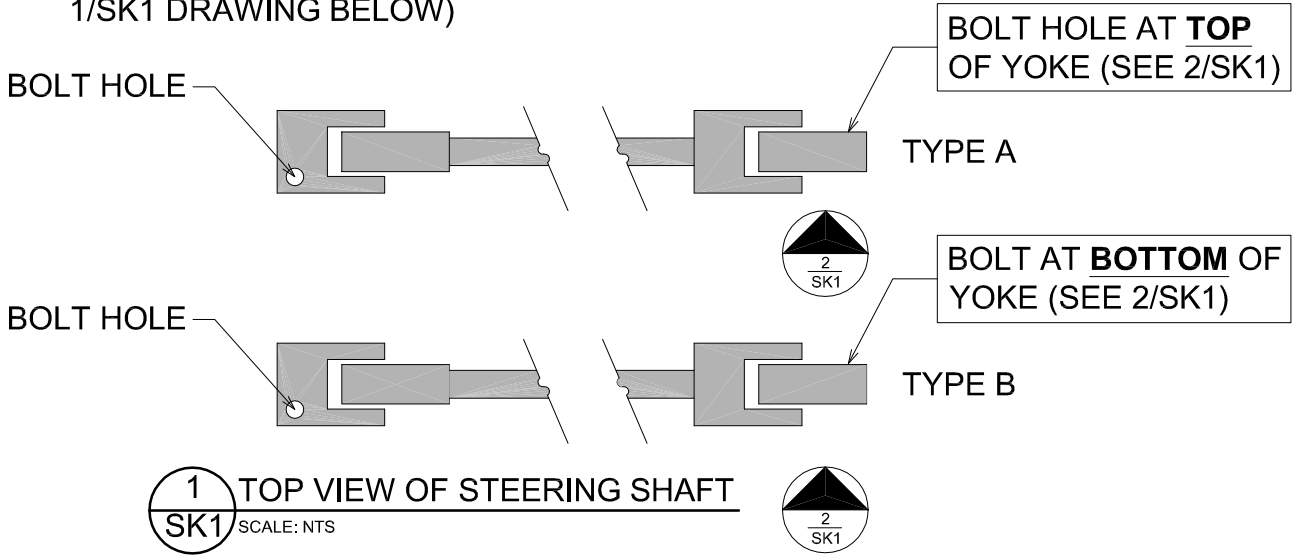


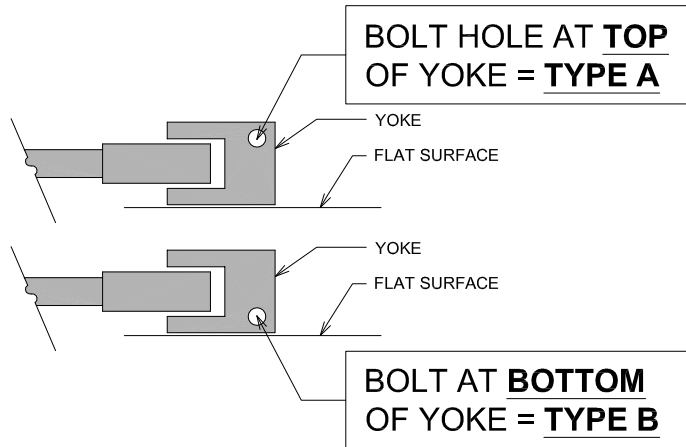
1. PLACE STEERING SHAFT ON FLAT SURFACE SO THE YOKE ON THE LEFT SIDE IS FLAT ON THE TABLE WITH THE BOLT HOLE AT THE BOTTOM (SEE 1/SK1 DRAWING BELOW)



2. THE YOKE ON THE RIGHT SIDE SHOULD BE IN A VERTICAL POSITION. OBSERVE THE LOCATION OF THE BOLT HOLE IN THE YOKE (LOOKING FROM THE SIDE). REFERENCE 2/SK1

IF THE BOLT HOLE IS AT **THE TOP** YOU HAVE A "**TYPE A**" STEERING SHAFT

IF THE BOLT HOLE IS AT **THE BOTTOM** YOU HAVE A "**TYPE B**" STEERING SHAFT



2
SK1 SIDE VIEW OF STEERING SHAFT YOKE
SCALE: NTS

EICHMEIER MOTORSPORT, LLC.
52 CRANE AV
MAYNARD, MA 01754
PHONE 339.222.2003 -
EMAIL: SALES@EMOTORSPORTS.ORG

STEERING SHAFT
924S, 944, 951, & 968
TYPE A & TYPE B

PROJ. #: NA
DATE: 6/24/2013
SCALE: NTS

SHEET NO:

SK
1